

1,526 sf | 2 Bedrooms | 2 Baths

The Ashford



Bold elements overhead create a contemporary aesthetic in The Ashford. A tray ceiling makes a remarkable opening statement in the foyer, while the clipped cathedral ceiling in the great room heightens the symmetry of that space. A graceful arch brings the kitchen into play, defining its snack bar and two thresholds into the heart of the home. A cathedral ceiling in the owner's suite elevates the luxury of the room with its optional box-out window, two closets and five piece bath.

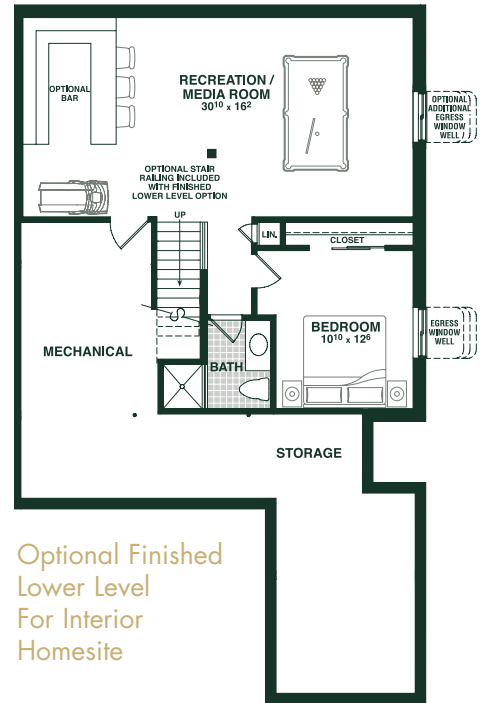
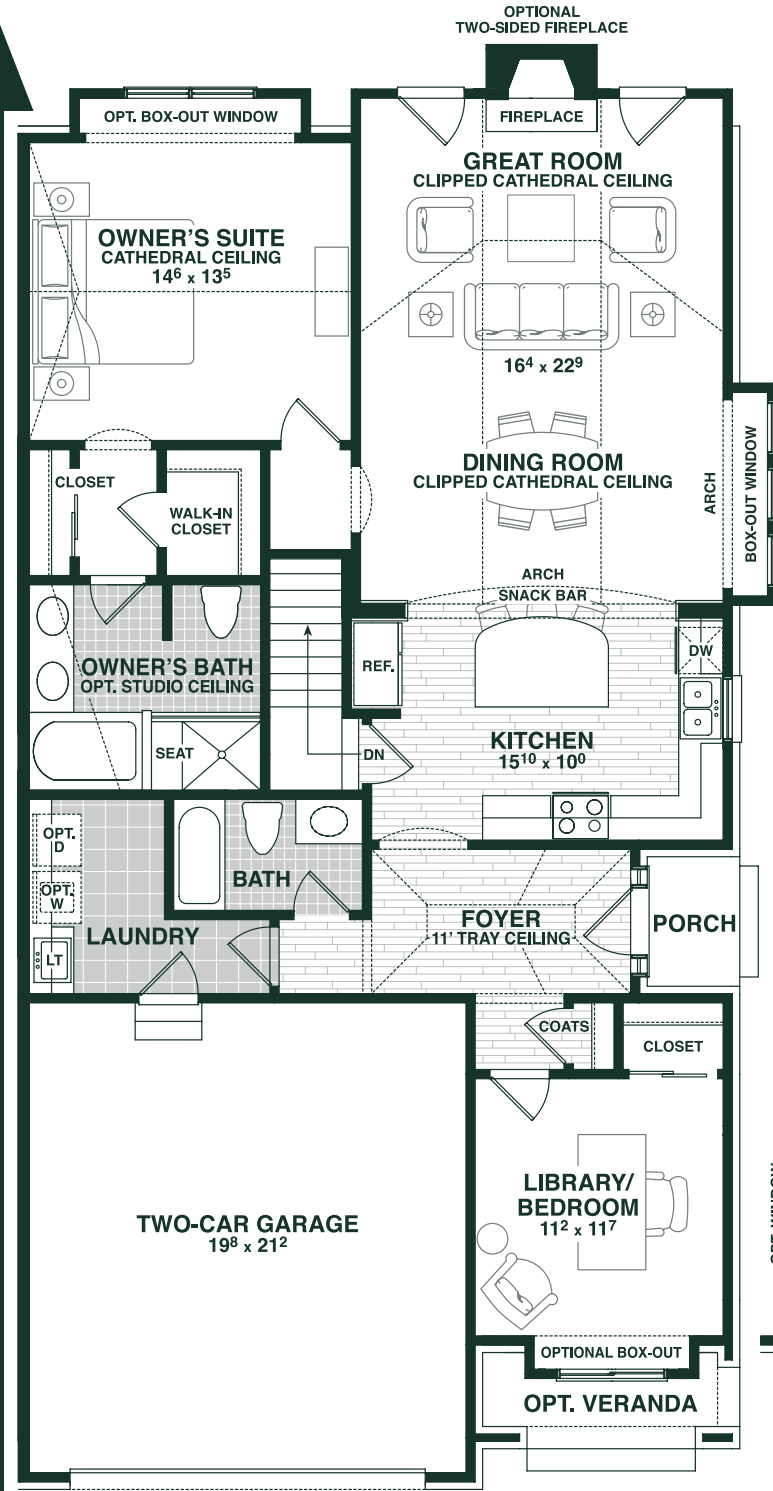


In our continuing effort to meet homebuyer's expectations, we reserve the right to modify features, price, specifications and/or to change or discontinue models without notice or obligation. Floor plan dimensions are approximate. Room dimensions do not include optional bays or box-outs. Floor plan shown may vary from actual home. Ceiling designs vary per elevation. Copyright 2017.

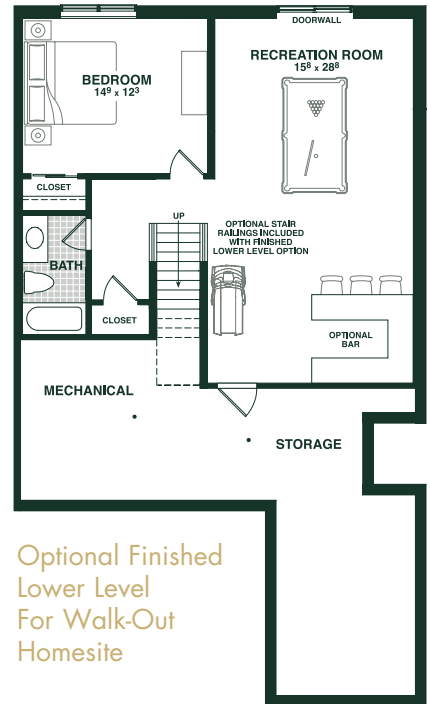


1,526 sf | 2 Bedrooms | 2 Baths

The Ashford



Optional Finished Lower Level For Interior Homesite



Optional Finished Lower Level For Walk-Out Homesite

First Floor Plan - 9' Ceilings



info@columbiahomesmi.com
(586) 630-0440
 columbiahomesmi.com

In our continuing effort to meet homebuyer's expectations, we reserve the right to modify features, price, specifications and/or to change or discontinue models without notice or obligation. Floor plan dimensions are approximate. Room dimensions do not include optional bays or box-outs. Floor plan shown may vary from actual home. Ceiling designs vary per elevation. Copyright 2017.

